

FlexPro™

The Solution for Lithographic Color Management

FlexPro is LithoTel's latest pressroom oriented color auditing software, designed to be used in conjunction with ColorPro. FlexPro provides a user-friendly method to interpret color data collection at the press side, while more complex data analysis can be performed by ColorPro through a shared database.

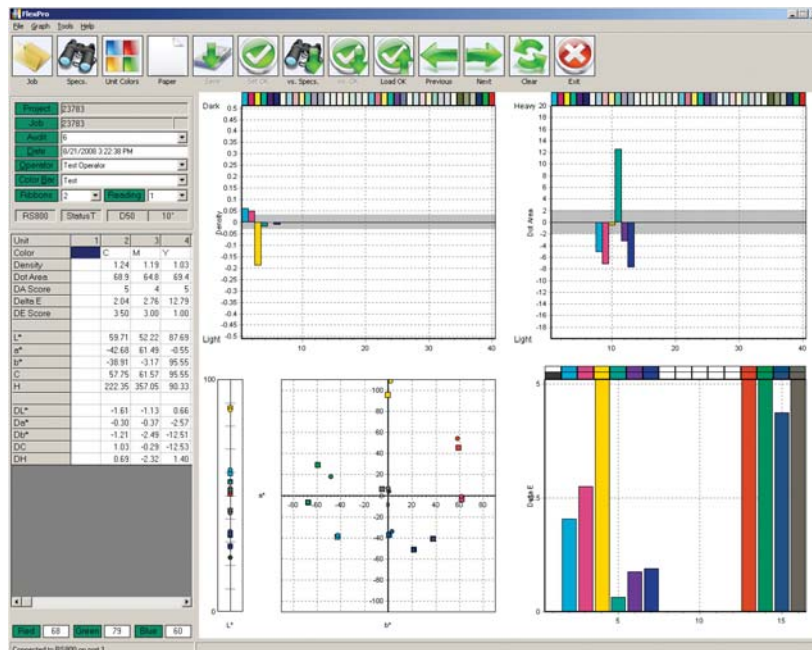
How does it work?

A press side FlexPro installation shares a common SQL database with ColorPro. Jobs are initially prepared in ColorPro, and are easily selected in FlexPro from a list. Using a scanning spectrophotometer, such as the Techkon RS800 or X-Rite i1, color targets on the printed sheet are scanned within seconds and saved to the database.

Once the targets are scanned, FlexPro displays the color data as simple graphs showing density, dot gain, CIEL *a*b* and Delta E, providing a straightforward snapshot of the scanned sheet. FlexPro also provides trend graphs of scans performed over the course of the job, allowing the operator to evaluate the printed color during the press run.

After the press run, the data scanned via FlexPro can be further analyzed in ColorPro, which also provides printed reports and can export the data for use in other software packages. FlexPro provides a very simple and easy to use front end for data collection and analysis at the press, while feeding shared color data to the more complex but powerful ColorPro software.

process control simplified



Scan Graphs - Displays the graphs for a single scan versus standard color targets, including density difference, dot gain difference, L*a*b* color space, and Delta E.

FlexPro™

SPECIFICATIONS

Graphing Modes Density, Dot Gain, CIEL*a*b* Color Space, Delta E

Maximum number of printing units 12

Compatible Spectrophotometers and Densitometers

Techkon RS800/RS400, XRite i1

SUPPLIED WITH PURCHASE

- FlexPro Software
- HASP - security dongle for each system (computer) installed
- Training can be purchased at additional cost, please contact your LithoTel dealer for details.

WARRANTY AND SUPPORT

All LithoTel softwares are warrantied from defects for 90 days. Additional support packages available, contact LithoTel Software for details.

Pre-sales Support 1-800-852-0236
Technical Support Line 905-668-3786
Email Support support@lithotel.ca
Internet www.lithotel.ca

PC REQUIREMENTS

The following is currently supplied/recommended for FlexPro, please confirm details with your LithoTel dealer

Supplier	Dell
Model	OptiPlex 330, Mini Tower
Processor	Dual Core 2.00GHZ, 1MB Cache
Power Supply	375W
Memory	1GB
Graphics Card	Integrated Video
Hard Drive	80GB
Operation System	WindowsXP
Optical Drive	48X CD-ROM Drive
Keyboard	USB English Keyboard
Mouse	USB Optical Mouse
USB Ports	6 USB Ports
Network Adapter	1 Gigabit Network Adapter
Serial Port	1 RS232 Serial Port
Service and Support	3 years Next Business Day On-Site Support

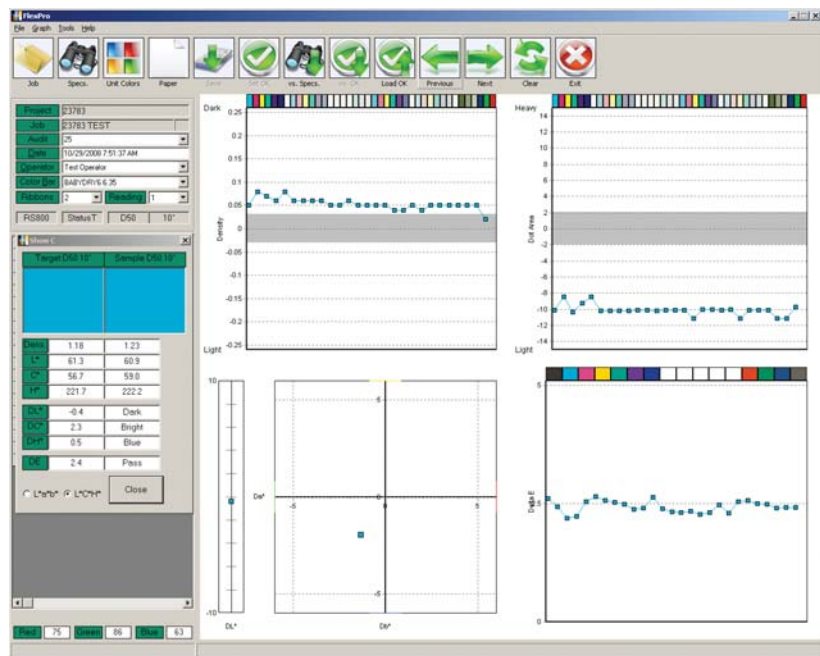
Recommended Monitors

Dell 15-Inch Flat Panel Colour LCD Touchscreen Monitor (E157FPT)

UPS

500 watt UPS system recommended

Trend Graphs – Displays progressive graphs for density difference, dot gain difference, L*a*b* difference, and delta E for the cyan ink over the course of all the scans for the job.



LithoTel Software Design Ltd

214 Dundas Street East Whitby ON Canada L1N 2H8
T 905 668-3786 F 905 666-4523 TF 800 852 0236



Specifications and terms are subject to change without notice. FlexPro and ColorPro are registered trademarks of LithoTel Software Design Ltd. All other product and brand names are trademarks and/or registered trademarks of their respective companies.