

ColorPro™

The Solution for Lithographic Color Management

ColorPro is pre-press and pressroom color auditing software that is both flexible and user friendly. Combine your choice of color measurement tool with a powerful solution that will enable you to diagnose and communicate print variations as never before.

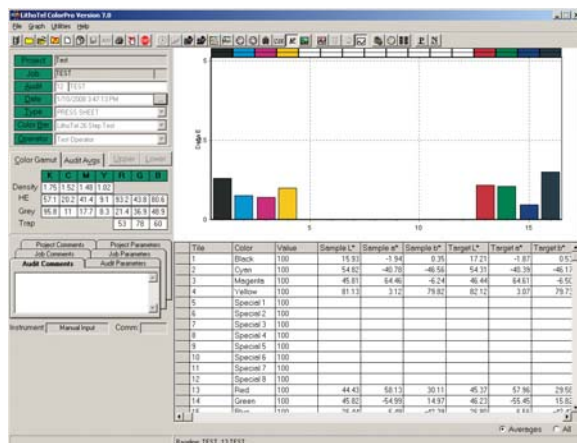
How does it work?

ColorPro retrieves statistical information from film, plates, proofs and press sheets using most transmission and hand-held reflection densitometers, including the Techkon RS 400 Scanning Densitometer, RS800 Scanning Spectrophotometer and Spectrodens. The system is also compatible with XRITE's scanning and hand held instrumentation.

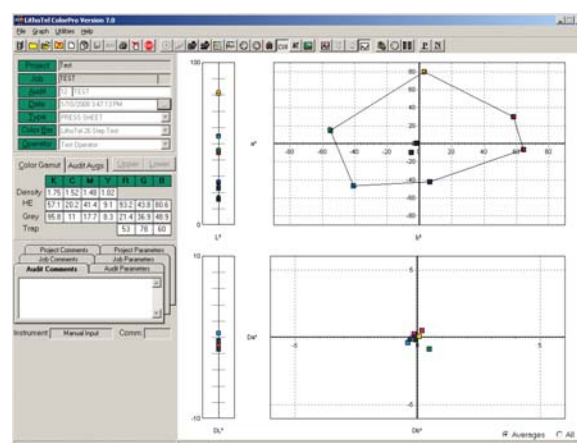
Readings from color bars are intuitively displayed as graphs showing ink density, density difference between sheets, dot gain, hue error, greyness values, achievable color space and more. Using this information, ColorPro can define the reproducible CMYK color space for proofs and presses. Invaluable for fingerprinting your process, it can also be used to trouble-shoot discrepancies within your prepress and printing facility.

Additional features to ColorPro include the LithoTelligence print analysis wizard, an essential tool for fine tuning your color process. Quality assurance reports containing control charts for density, midtone dot gain, trapping, hue error, grayness, print contrast and delta E are readily generated from the compiled readings. A full set of spectral data is also available in a report form. ColorPro data can also be exported to third party platforms.

process control simplified



Delta E – Displays the Delta E value for each ink calculated versus the set of target values as a bar graph above a numerical data table.



Spectral Color Space – Displays the absolute CIE Lab values for the set of colors (top graph), as well as the difference compared to a set of target values (bottom graph)

ColorPro™

SPECIFICATIONS

Graphing Modes Dot Area, Mechanical Dot Gain, Total Dot Gain, Density Absolute, Density Difference, Color Gamut, Scatter Graph, Hi Fi Trapping, Spectral Color Space, Spectral Delta E

Maximum number of printing units 12

Perfector Any combination to a maximum of 12 units

Compatible Spectrophotometers and Densitometers

Direct interface to Techkon RS400/800 and Spectrodens, XRite ATS / ATD, XRite i1
Serial interface to other handheld color measurement instruments (i.e. XRite 500 series)

SUPPLIED WITH PURCHASE

- ColorPro Software
- HASP - security dongle for each system (computer) installed
- Training can be purchased at additional cost, please contact your LithoTel dealer for details.

PC REQUIREMENTS

The following is currently supplied/recommended for ColorPro, please confirm details with your LithoTel dealer

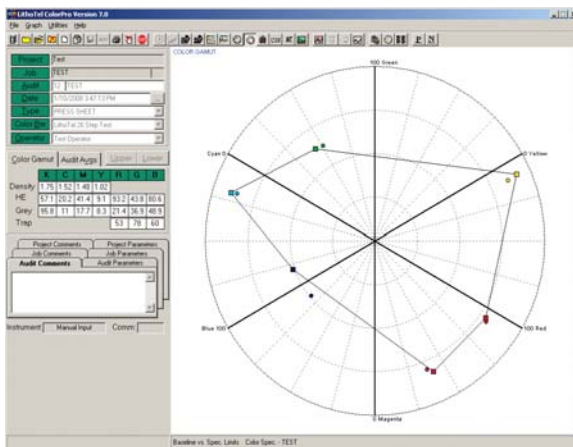
- Windows™ 2000 or XP Operating system
- 1 GHz processor or faster
- 256 MB RAM or more
- 200 MB free hard disk space
- CD-ROM drive, mouse and keyboard
- Video display capable of 800x600 resolution
- Serial communication port for measurement devices
- USB ports for HASP security key and Techkon DMS 910 Digital Microscope

UPS 500 watt UPS system recommended

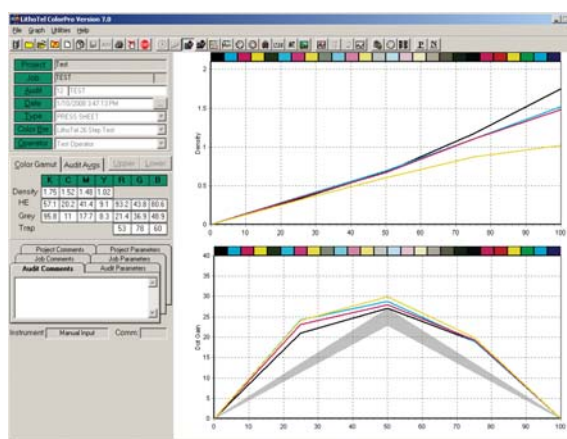
WARRANTY AND SUPPORT

All LithoTel softwares are warranted from defects for 90 days. Additional support packages available, contact LithoTel Software for details.

Pre-sales Support 1-800-852-0236
Technical Support Line 905-668-3786
Email Support support@lithotel.ca
Internet www.lithotel.ca



Color Gamut – This graph shows the achievable color space for a given set of printing inks or proofing toners. Color shifts due to trapping variations can be detected at a glance.



Dot Gain – This graph shows the density profile of a set of inks over a gradient range of 0 to 100%, and the resulting dot gains for the same gradient.

LithoTel Software Design Ltd

214 Dundas Street East Whitby ON Canada L1N 2H8
T 905 668-3786 F 905 666-4523 TF 800 852 0236



Specifications and terms are subject to change without notice. ColorPro is a registered trademark of LithoTel Software Design Ltd. All other product and brand names are trademarks and/or registered trademarks of their respective companies.