



SUBJECT

ColorLinx Presets–Applying Presets

EFFECTIVE DATE

July 6, 2004

S.O.P. NUMBER

PRE001

DATE REVISED

Oct 1, 2008

PAGE

1

OF

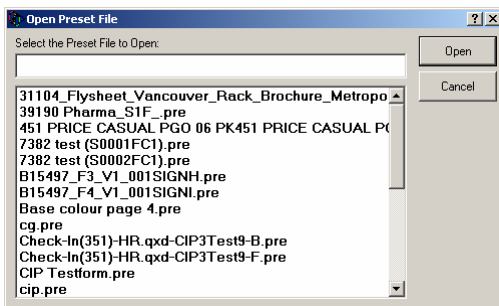
1

Standard Operating Procedure

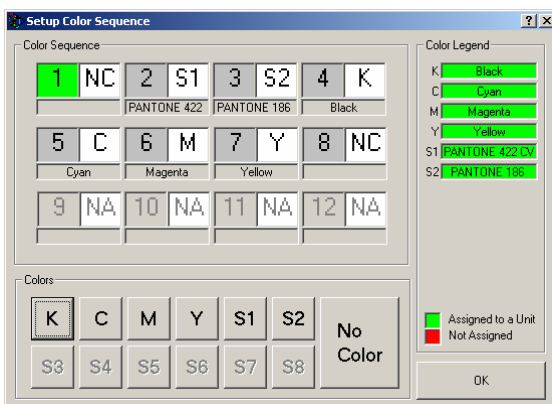
The ColorLinx Presets software program allows the Pressman to easily apply CIP preset data to the ink control console.



1. To begin the presetting process, press the **CIP Preset** button that is located on the main screen.
2. The Open Preset File window will then appear.

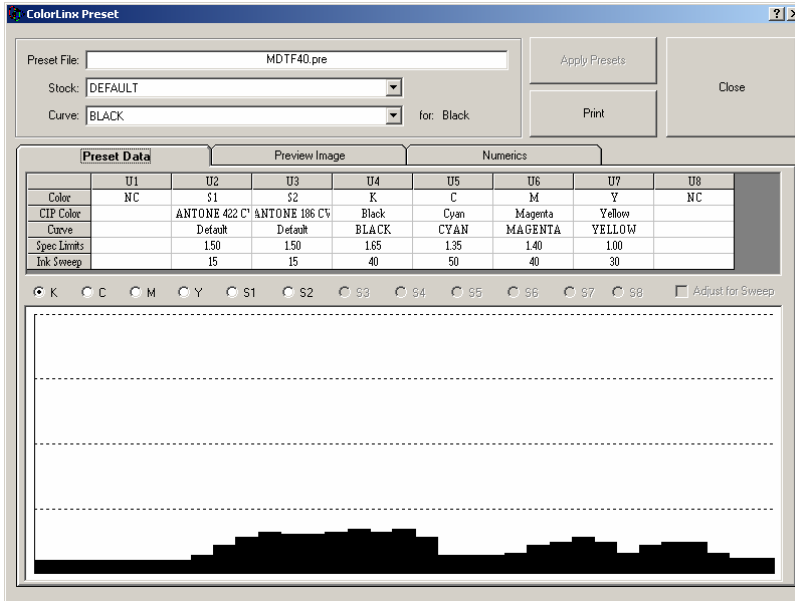


3. Select the desired Job and then press the **Open** button.
4. You will then be presented with the following window.



5. Configure the colour sequence in the software to match the sequence that you will be running on press.
6. Press the **Close** button when complete.

7. The CIP3 Presets window will then appear.



8. This form will allow you to look at the recommended ink key setting for each colour and to view a preview image of the job.
9. After verifying that the correct job has been loaded, the ink sequence has been set correctly and that the ink key presets are inline with what you would expect, you can press the **Apply Presets** button to send the data to the console.

Note: Depending on your press, the presets may need to be loaded and/or released from memor in-order to finish the presetting process.

10. After the presetting process has completed, you can start running the job.