

# ColorLinx Guide

## Intellitrax & Spectro Drive

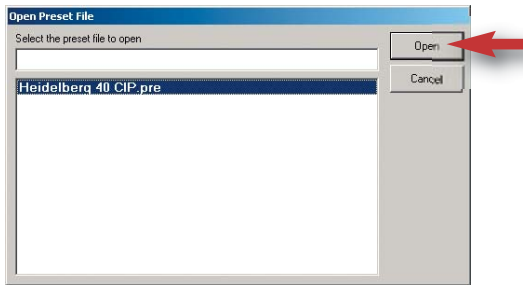


LithoTel

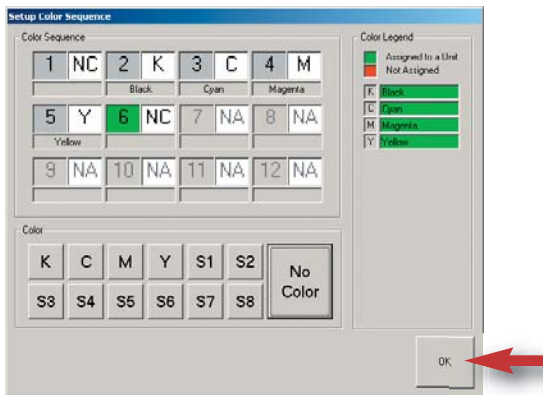
**Step 1** – Press the *CIP Preset* button



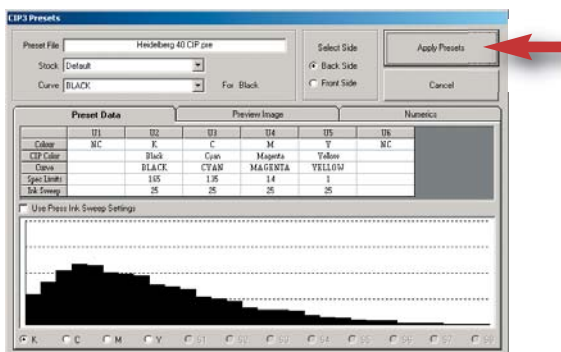
**Step 2** – Select the appropriate Job from the list and press the *Open* button



**Step 3** – Set the Color Sequence and then press the *OK* button



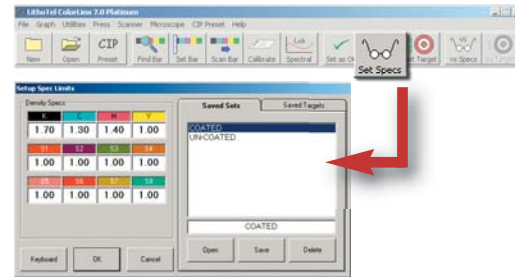
**Step 4** – Verify the suggested ink profiles and preview image, and then press *Apply Presets*



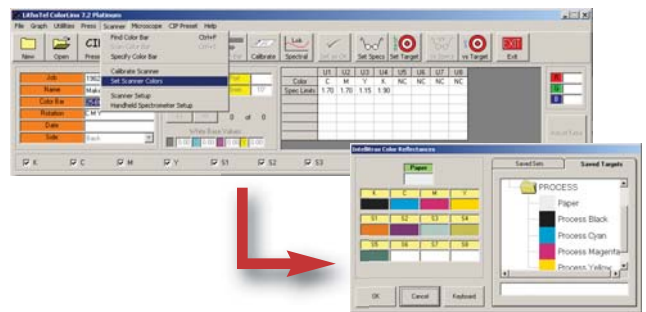
**Step 5** – Select the appropriate color bar using the *Color Bar* combo box



**Step 6** – Press the *Set Spec* button and verify the correct density targets are entered



**Step 7** – Select *Set Scanner Colors* from the *Scanner* menu and verify that the correct colors have been set



**Step 8** – Position the press sheet in the scanner and then press *Find Bar*



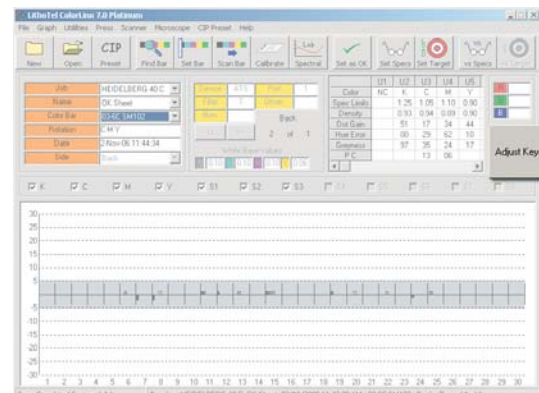
**Step 9** – For subsequent scans, position the press sheet and press *Scan Bar*



**Step 10**

**Platinum** – To have the software make the necessary ink key adjustments, press *Adjust Keys*

**Silver** – To save the scan to the database press *Save Scan*



Repeat *Steps 9 & 10* for the remainder of Job