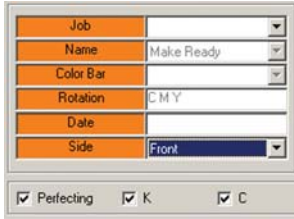


Intellitrax & Spectro Drive PERFECTING

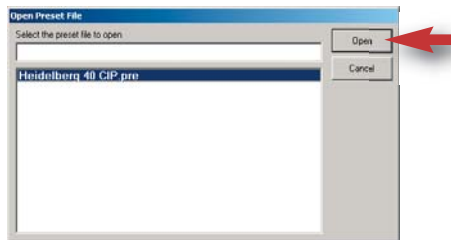
Step 1 – Set the appropriate perfecting mode option by using the Perfecting Check box



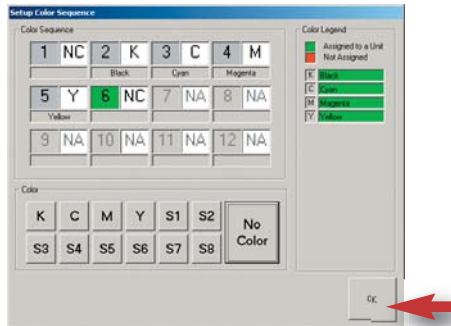
Step 2 – Press the *CIP Preset* button



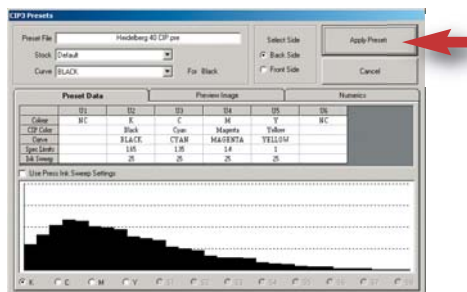
Step 3 – Select the appropriate Job from the list and press the *Open* button



Step 4 – Set the Color Sequence and then press the *OK* button



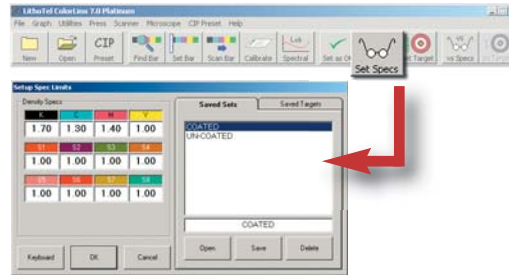
Step 5 – Verify the suggested ink profiles and preview image, and then press *Apply Presets*



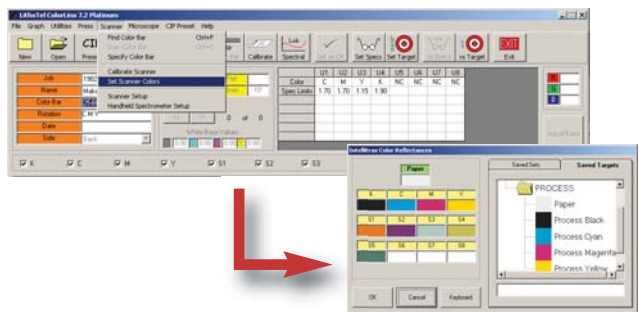
Step 6 – Select the appropriate color bar using the *Color Bar* combo box



Step 7 – Press the *Set Spec* button and verify the correct density targets are entered



Step 8 – Select *Set Scanner Colors* from the *Scanner* menu and verify that the correct colors have been set



Step 9 – Position the press sheet in the scanner and then press *Find Bar*



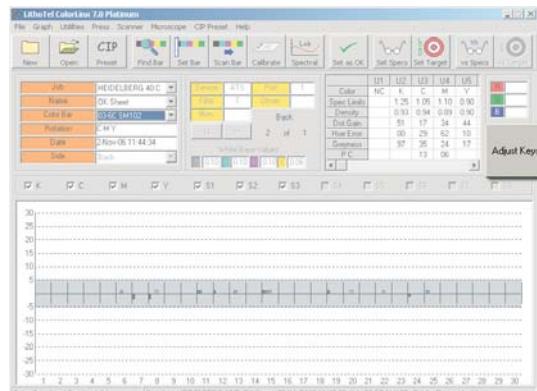
Step 10 – For subsequent scans, position the press sheet and press *Scan Bar*



Step 11

Platinum – To have the software make the necessary ink key adjustments, press *Adjust Keys*

Silver – To save the scan to the database press *Save Scan*



Repeat **Steps 10 & 11** for the remainder of Job