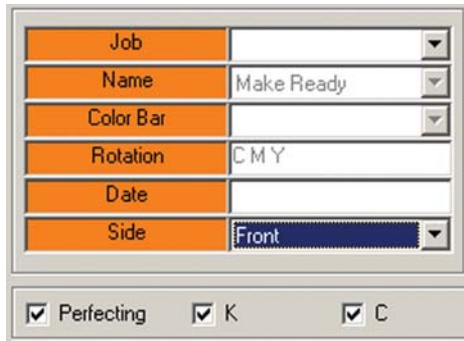
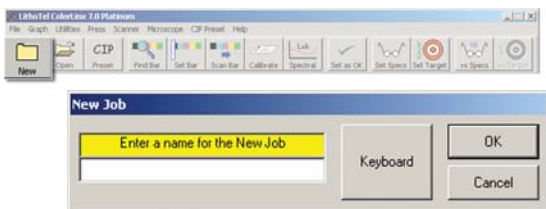


Intellitrax & Spectro Drive PERFECTING

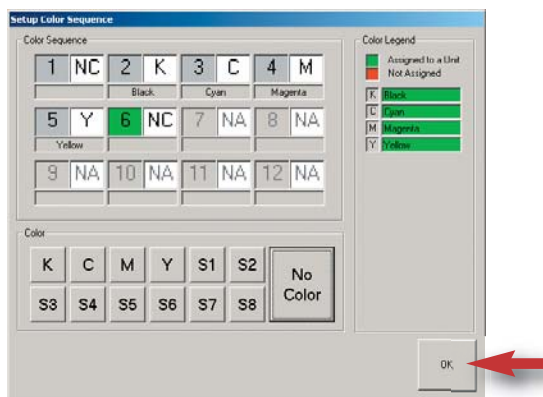
Step 1 – Set the appropriate perfecting mode option by using the *Perfecting* Check box



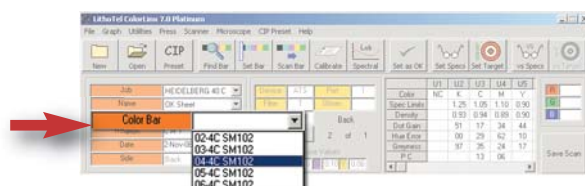
Step 2 – Press *New*, enter a name and press *OK*



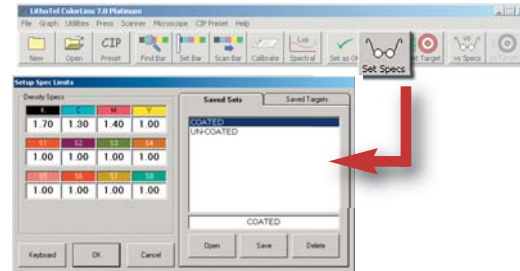
Step 3 – Select *Setup Color Sequence* from the Press Menu. Set the desired sequence and then press the *OK* button



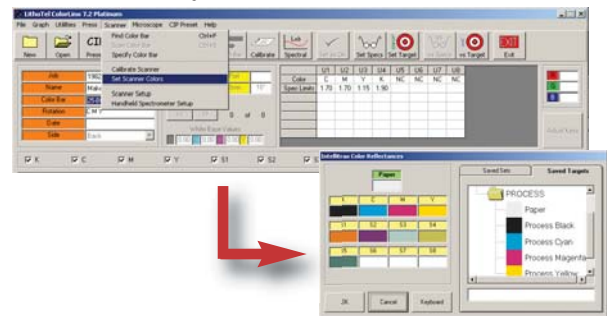
Step 4 – Select the appropriate color bar using the *Color Bar* combo box



Step 5 – Press the *Set Spec* button and verify the correct density targets are entered



Step 6 – Select *Set Scanner Colors* from the *Scanner* menu and verify that the correct colors have been set



Step 7 – Position the press sheet in the scanner and then press *Find Bar*



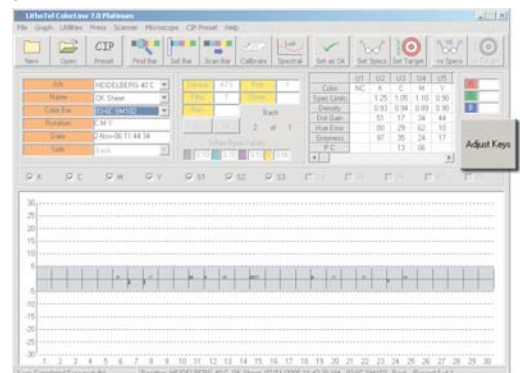
Step 8 – For subsequent scans, position the press sheet and press *Scan Bar*



Step 9

Gold – To have the software make the necessary ink key adjustments, press *Adjust Keys*

Bronze – To save the scan to the database, press *Save Scan*



Repeat *Steps 8 & 9* for the remainder of Job