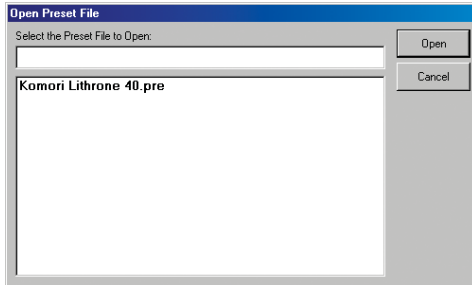


SENDING PRESET DATA TO THE CONSOLE

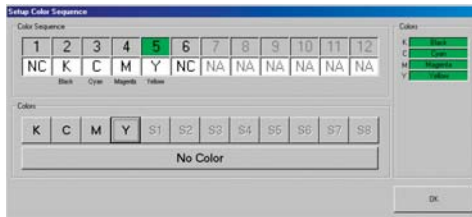
Step 1 – Press the **CIP Preset** button



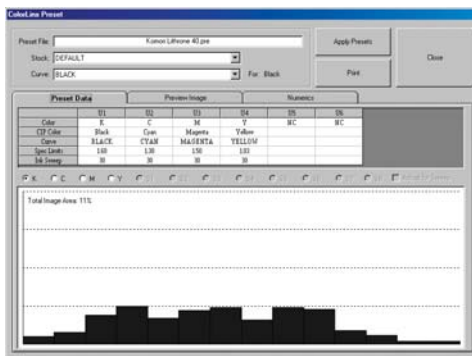
Step 2 – Select the appropriate Job from the list and press the **Open** button



Step 3 – Set the Color Sequence and then press the **OK** button



Step 4 – Verify the suggested ink profiles and preview image, and then press **Apply Presets**

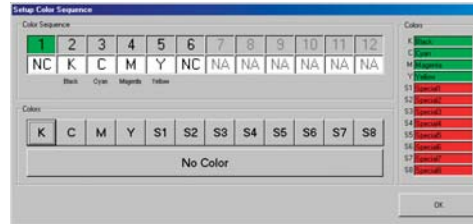


SAVING SETTINGS AT THE END OF THE RUN

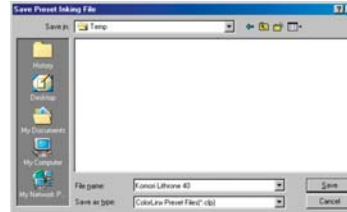
Step 1 – Press the **Save Settings** button



Step 2 – Verify the color sequence is correct, if not make the necessary modifications, and then press the **OK** button



Step 3 – Enter a Name for the job and then press the **Save** button (for the system to Learn – the default name must be used)



RECALLING SAVED INK KEY SETTINGS

Step 1 – Press the **Recall Settings** button



Step 2 – Select the job you would like to recall and then press the **Open** button



Step 3 – Set the Color Sequence and then press the **OK** button

